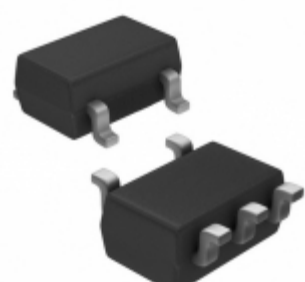


## S-80849CNMC-B9AT2G



**SII** SII Semiconductor Corporation

**Part Number:** [S-80849CNMC-B9AT2G](#)  
**Manufacturer:** [SII Semiconductor Corporation](#)  
**Description:** IC VOLT DETECTOR 4.9V SOT23-5  
**Data sheet:** [S-808xxC Series](#)

**RoHS Status:** Lead free / RoHS Compliant  
**Ship From:** Hong Kong  
**Shipment Way:** DHL/Fedex/TNT/UPS/EMS

Images are for reference only.  
 See Product Specifications for product details.  
 Buy S-80849CNMC-B9AT2G with confidence from  
 Component-World.HK, 1 Year Warranty

[Request For Quotation](#)

### PRODUCT PARAMETER

<b>Part Number</b>	S-80849CNMC-B9AT2G	<b>Manufacturer</b>	<a href="#">SII Semiconductor Corporation</a>
<b>Description</b>	IC VOLT DETECTOR 4.9V SOT23-5	<b>Lead Free Status / RoHS Status</b>	Lead free / RoHS Compliant
<b>Quantity Available</b>	215894 pcs	<b>Data sheet</b>	<a href="#">S-808xxC Series</a>
<b>Category</b>	<a href="#">Integrated Circuits (ICs)</a>	<b>Voltage - Threshold</b>	4.9V
<b>Type</b>	Voltage Detector	<b>Supplier Device Package</b>	SOT-23-5
<b>Series</b>	S-808xxC	<b>Reset Timeout</b>	-
<b>Reset</b>	Active Low	<b>Packaging</b>	Tape & Reel (TR)
<b>Package / Case</b>	SC-74A, SOT-753	<b>Output</b>	Open Drain or Open Collector
<b>Operating Temperature</b>	-40°C ~ 85°C (TA)	<b>Number of Voltages Monitored</b>	1
<b>Mounting Type</b>	Surface Mount	<b>Moisture Sensitivity Level (MSL)</b>	1 (Unlimited)
<b>Lead Free Status / RoHS Status</b>	Lead free / RoHS Compliant	<b>Detailed Description</b>	Supervisor Open Drain or Open Collector 1 Channel SOT-23-5

Component-World.com is a Reliable Stocking Distributor of Electronic Components. We specialize in all SII Semiconductor Corporation series electronic components. We have 215894 pieces of SII Semiconductor Corporation S-80849CNMC-B9AT2G in stock available now. Request a quote from electronics components distributor at Component-World.com, our sales team will contact you within 24 hours.  
 RFQ Email: [info@Components-World.com](mailto:info@Components-World.com)

### RELATED PRODUCTS

	<b>Part#:</b> <a href="#">S-80849CLPF-B7ATFU</a> <b>Description:</b> IC VOLT DETECTOR 4.9V SNT-4A	<b>Manufacturers:</b> <a href="#">SII Semiconductor Corporation</a>	<a href="#">RFQ</a>
	<b>Part#:</b> <a href="#">S-80849CLUA-B7AT2G</a> <b>Description:</b> IC VOLT DETECTOR 4.9V SOT89-3	<b>Manufacturers:</b> <a href="#">SII Semiconductor Corporation</a>	<a href="#">RFQ</a>
	<b>Part#:</b> <a href="#">S-80849CLPF-B7ATFG</a> <b>Description:</b> IC VOLT DETECTOR 4.9V SNT-4A	<b>Manufacturers:</b> <a href="#">SII Semiconductor Corporation</a>	<a href="#">RFQ</a>
	<b>Part#:</b> <a href="#">S-80849CLY-B-G</a> <b>Description:</b> IC VOLT DETECTOR 4.9V TO-92	<b>Manufacturers:</b> <a href="#">SII Semiconductor Corporation</a>	<a href="#">RFQ</a>
	<b>Part#:</b> <a href="#">S-80849CNMC-B9AT2U</a> <b>Description:</b> IC VOLT DETECTOR 4.9V SOT23-5	<b>Manufacturers:</b> <a href="#">SII Semiconductor Corporation</a>	<a href="#">RFQ</a>
	<b>Part#:</b> <a href="#">S-80849CNPB-B9ATFU</a> <b>Description:</b> IC VOLT DETECTOR 4.9V SNT-4A	<b>Manufacturers:</b> <a href="#">SII Semiconductor Corporation</a>	<a href="#">RFQ</a>
	<b>Part#:</b> <a href="#">S-80849CNY-B2-U</a> <b>Description:</b> IC VOLT DETECTOR 4.9V TO-92	<b>Manufacturers:</b> <a href="#">SII Semiconductor Corporation</a>	<a href="#">RFQ</a>
	<b>Part#:</b> <a href="#">S-80849CNNB-B9AT2G</a> <b>Description:</b> IC VOLT DETECTOR 4.9V SC-82AB	<b>Manufacturers:</b> <a href="#">SII Semiconductor Corporation</a>	<a href="#">RFQ</a>
	<b>Part#:</b> <a href="#">S-80849CNY-Z2-U</a> <b>Description:</b> IC VOLT DETECTOR 4.9V TO-92	<b>Manufacturers:</b> <a href="#">SII Semiconductor Corporation</a>	<a href="#">RFQ</a>
	<b>Part#:</b> <a href="#">S-80849CNY-B-G</a> <b>Description:</b> IC VOLT DETECTOR 4.9V TO-92	<b>Manufacturers:</b> <a href="#">SII Semiconductor Corporation</a>	<a href="#">RFQ</a>
	<b>Part#:</b> <a href="#">S-80849CLY-Z2-U</a> <b>Description:</b> IC VOLT DETECTOR 4.9V TO-92	<b>Manufacturers:</b> <a href="#">SII Semiconductor Corporation</a>	<a href="#">RFQ</a>
	<b>Part#:</b> <a href="#">S-80849CNUA-B9AT2U</a> <b>Description:</b> IC VOLT DETECTOR 4.9V SOT89-3	<b>Manufacturers:</b> <a href="#">SII Semiconductor Corporation</a>	<a href="#">RFQ</a>
	<b>Part#:</b> <a href="#">S-80849CNNB-B9AT2U</a> <b>Description:</b> IC VOLT DETECTOR 4.9V SC-82AB	<b>Manufacturers:</b> <a href="#">SII Semiconductor Corporation</a>	<a href="#">RFQ</a>
	<b>Part#:</b> <a href="#">S-80849CLNB-B7AT2G</a> <b>Description:</b> IC VOLT DETECTOR 4.9V SC-82AB	<b>Manufacturers:</b> <a href="#">SII Semiconductor Corporation</a>	<a href="#">RFQ</a>
	<b>Part#:</b> <a href="#">S-80849CLY-B2-U</a> <b>Description:</b> IC VOLT DETECTOR 4.9V TO-92	<b>Manufacturers:</b> <a href="#">SII Semiconductor Corporation</a>	<a href="#">RFQ</a>
	<b>Part#:</b> <a href="#">S-80849CNPB-B9ATFG</a> <b>Description:</b> IC VOLT DETECTOR 4.9V SNT-4A	<b>Manufacturers:</b> <a href="#">SII Semiconductor Corporation</a>	<a href="#">RFQ</a>
	<b>Part#:</b> <a href="#">S-80849CLUA-B7AT2U</a> <b>Description:</b> IC VOLT DETECTOR 4.9V SOT89-3	<b>Manufacturers:</b> <a href="#">SII Semiconductor Corporation</a>	<a href="#">RFQ</a>
	<b>Part#:</b> <a href="#">S-80849CLNB-B7AT2U</a> <b>Description:</b> IC VOLT DETECTOR 4.9V SC-82AB	<b>Manufacturers:</b> <a href="#">SII Semiconductor Corporation</a>	<a href="#">RFQ</a>
	<b>Part#:</b> <a href="#">S-80849CLMC-B7AT2U</a> <b>Description:</b> IC VOLT DETECTOR 4.9V SOT23-5	<b>Manufacturers:</b> <a href="#">SII Semiconductor Corporation</a>	<a href="#">RFQ</a>
	<b>Part#:</b> <a href="#">S-80849CNUA-B9AT2G</a> <b>Description:</b> IC VOLT DETECTOR 4.9V SOT89-3	<b>Manufacturers:</b> <a href="#">SII Semiconductor Corporation</a>	<a href="#">RFQ</a>

### Related keywords for S-80849CNMC-B9AT2G

SII Semiconductor Corporation S-80849CNMC-B9AT2G	S-80849CNMC-B9AT2G distributor	S-80849CNMC-B9AT2G supplier	S-80849CNMC-B9AT2G price
	S-80849CNMC-B9AT2G download datasheet	S-80849CNMC-B9AT2G datasheet	S-80849CNMC-B9AT2G stock
buy S-80849CNMC-B9AT2G	SII Semiconductor Corporation S-80849CNMC-B9AT2G		